



## Morris House, Clapham, SW4

3 bedroom flat to let

£611 Per Week

Furnished

### Property Details

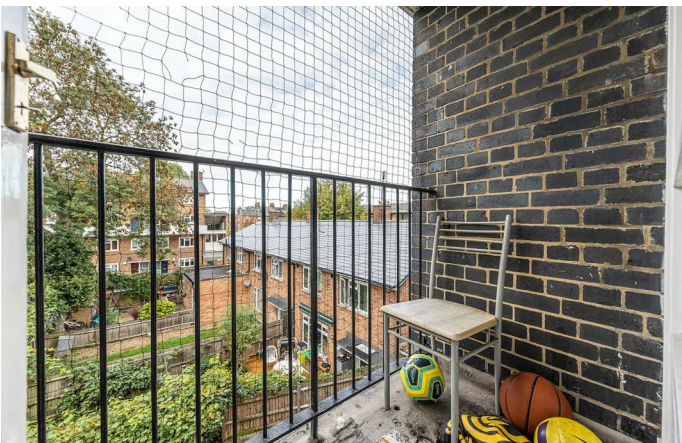
Keating Estates are proud to present this wonderful newly refurbished three double bedroom split level flat located within walking distance of Clapham Common. The flat comes complete with a large reception room with access to the private balcony, a separate kitchen fitted with plenty of storage and modern appliances, three spacious double bedrooms and a modern bathroom shared between all three bedrooms. The flat is in close proximity of both Clapham and Brixton giving you the best of both areas. The bars and restaurants of Acre Lane are a short walk and within a ten-minute stroll down the road, you will reach the vibrant and diverse Clapham High Street offering cracking nightlife and culinary delights. On the other direction, you will have everything that Brixton has to offer, from music venues and the extremely popular Brixton Village, to large brand-shops and convenient transport links.

Council tax band C      EPC rating D (59)

### Features

- Purpose Built Flat
- Three bedrooms
- Spacious reception
- Separate Kitchen
- Close To Transport Links
- Minutes from Clapham High Street
- Balcony
- Newly refurbished







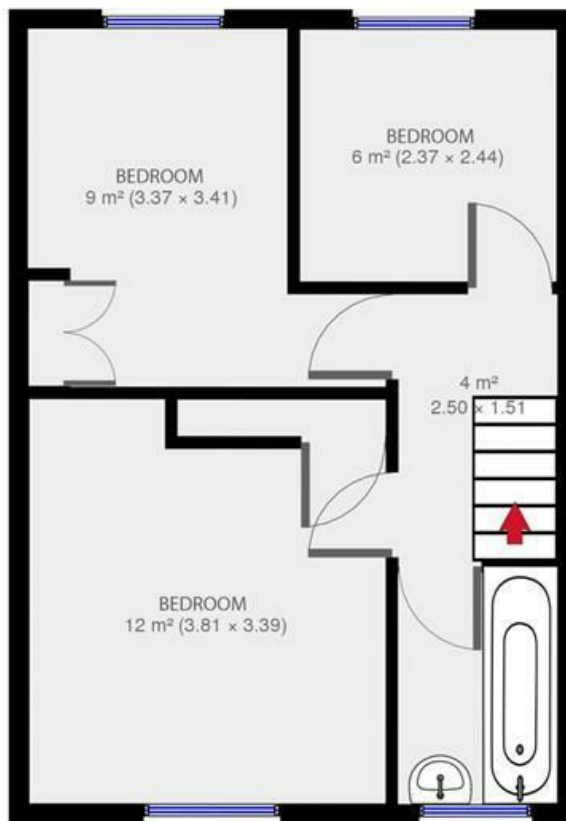
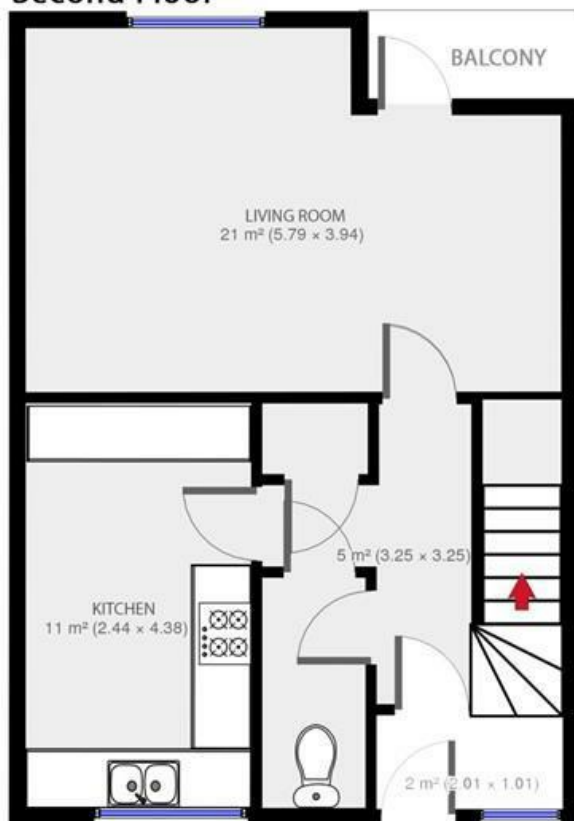
3 bed flat.

Approx internal area:

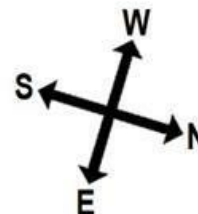
**850 sqft 79 sqm**

While we do try our very best, floor plans are produced as a guide only and we take no responsibility for the precise accuracy with which any property is represented

### Second Floor



### Third Floor



**Morris House**



Morris House, Clapham, SW4

